



Hana S. |



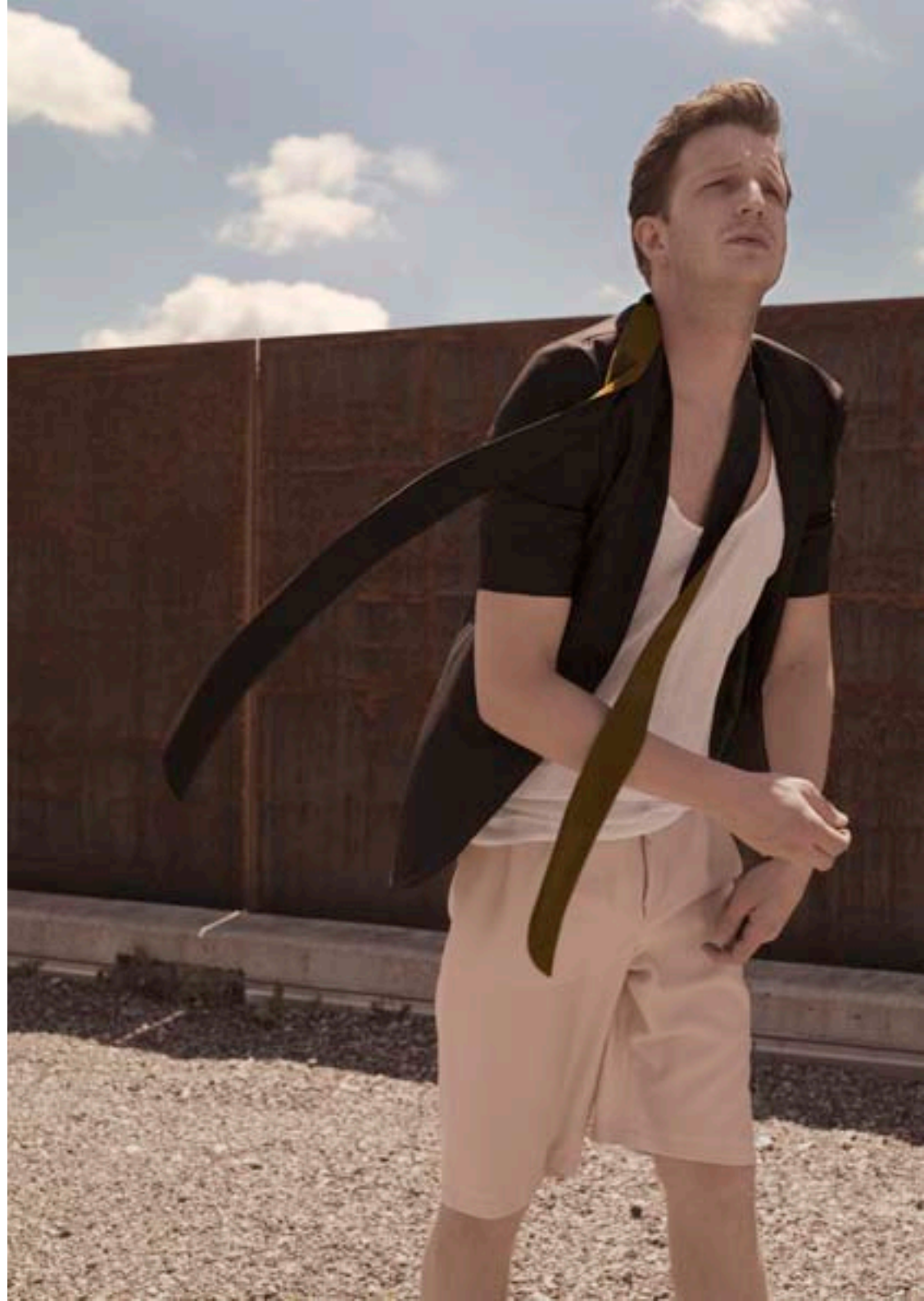


























No. xxy





how i work:  
old blazer formed up on the bust, male cuts/slices  
mold to female body

materiels:  
wool, silk, modal, viscose

colors:  
creme colouring, in all his nuances is building  
the general view  
compendium  
pure clear open fragile  
bears  
conduct  
mild simple  
details are coming to surface  
articulated by deep black  
calm  
tranquilized  
dwelled

saffron

fixture neutral  
is resting in itself





Satran-schlamm



latex-eierschale



altrosa-cofzporne



grane kaus



antra-androgyn



antra-nacht



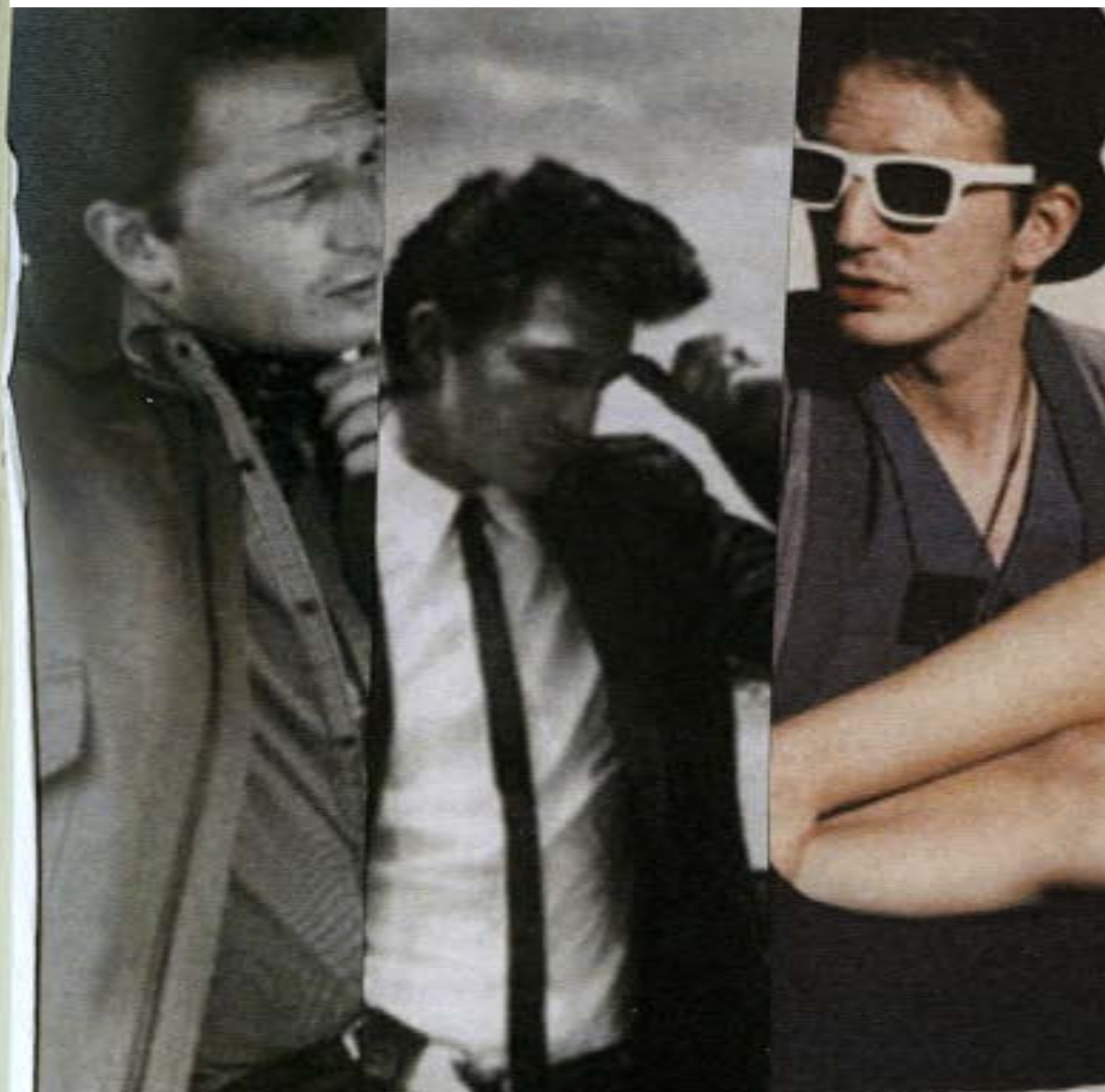




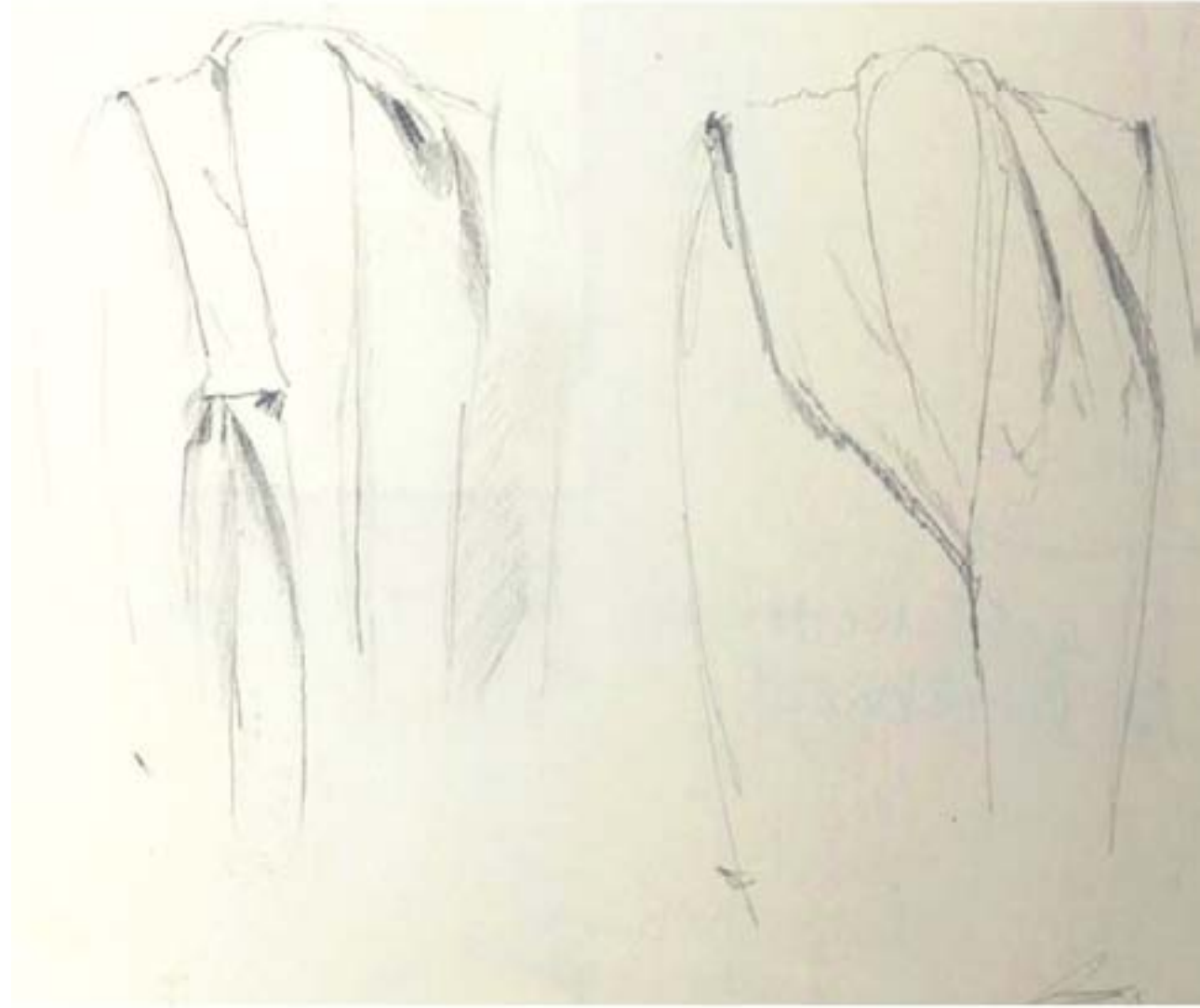














Handwritten notes at the top left of the page, partially obscured by a vertical line.

find ich  
sehr schön



Ärmel Zusa  
zu Finger →  
abstoppen

→ Ärmel rungeklappt  
→ Label nach aussen

Wentrieken groter  
Label h.



Für klein Verschluss  
Revers  
aufgeschnitten  
↓  
an Ärmel  
gehängt





?? Kann es  
einfach holl-  
Napieren od  
verschleibt  
sich alles?

Wannher?  
Besatz?  
dunkler?  
Handstick

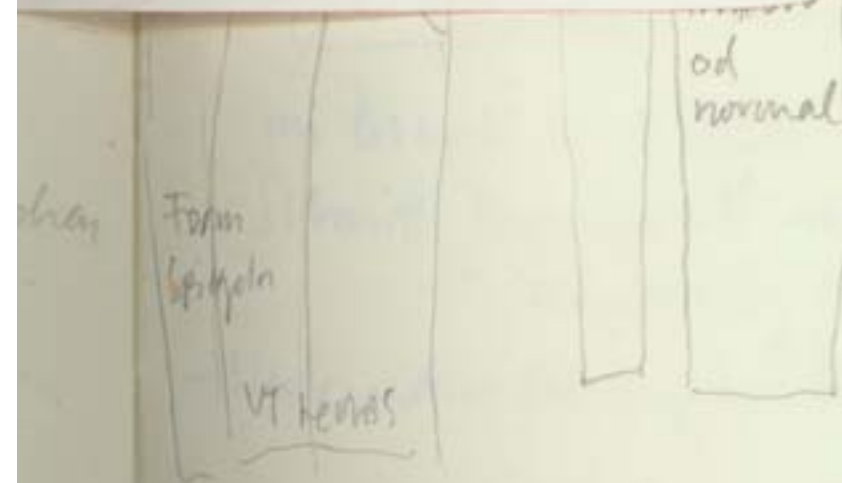
Bruch



6cm EW  
- weit

- Kamerschulterpolster  
- Fischli

go to page 852



od  
normal

Form  
Spiegel

vt henos













